



The VTLED is a low profile narrow Vapor Tight luminaire that is an excellent choice for parking garages, car washes, cool storage areas and locations subject to the elements due to its vapor and dust proof enclosure.

VTLED narrow enclosed vapor & dust-proof



POWER SELECT



COLOR SELECT

Features and Specifications:

- Available in 2' 4' or 8' lengths (nominal)
- Featuring Power and Color Select technology (3500K-5000K)
- Traditional design, narrow body, Vapor Tight fixture, suitable for rugged, demanding applications
- Powered 120-277V, 0-10V dimming LED driver, 10% minimum
- Smooth, diffused, impact resistant polycarbonate lens provides even lit appearance
- Compatible with motion and occupancy sensors, featuring high-end trim and daylight sensing.
- Stainless steel, tamper resistant lens clips (screws not included)
- Includes mounting hardware, cordgrip, and hole plug for out-of-the-box installation
- NEMA 4X rated enclosure
- IP66 Ingress Protection
- IK10 Impact Rating
- Ambient operating temperature: -40°C/-40°F to 50°C/122°F
- LED chip lifetime: L70 >100,000 hours @ 25°C/77°F ambient fixture temperature
- PF: > 0.95
- THD: < 20%
- UL Certified for Wet Locations
- ETL Sanitation Listed NSF/ANSI Standard 2 - Food Equipment, Splash Zone (Not for Direct Food Zone)

Warranty:

- 5 years - part replacement only (see our terms & conditions page at www.lamarled.com for details)

Ordering Guide / Example

VTLED-4A-44PS-8CSA

VTLED				
Series	Size	Selectable Power	Selectable Color (CCT)	General Options
VTLED	2A = 2' nominal	25PS = 15-25W (2' model)	8CSA = 3500K, 4000K or 5000K	MW3 = Microwave occupancy/daylight sensor (IP65) EM5 = 5W, 500 lumen emergency battery backup, 30 Deg C ambient max (not available in 2ft model) Accessories VTLED-TPSCREW-KIT = Tamper-proof screws kit VTLED-45SM-KIT = 45 Deg surface mounting kit
	4A = 4' nominal	44PS = 18-44W (4' model)		
	8A = 8' nominal	90PS = 54-90W (8' model)		

Consult factory for additional options not shown or listed including optional motion sensor

* Preset to highest lumen output (90W / 5000K)

* Color Uniformity: CCT (Correlated Color Temperature) range as per guidelines outlined in ANSI C78.377-2017.

Project Information:

Job Name: _____ Fixture Type: _____

Catalog #: _____ Date: _____

Comments: _____

Certification & Listings:



Lumen/Wattage Chart

Catalog Number	Input Voltage	Wattage	Color Temperature	Lumens	Efficacy	Rated Life	CRI	Power Factor
VTLED-2A-25PS-8CSA	120-277V	25W	3500K	3,250	130 lm/W	> 80	> 0.90	50,000 hrs
			4000K	3,275	131 lm/W			
			5000K	3,300	132 lm/W			
		20W	3500K	2,660	133 lm/W			
			4000K	2,680	134 lm/W			
			5000K	2,700	135 lm/W			
		15W	3500K	2,040	136 lm/W			
			4000K	2,055	137 lm/W			
			5000K	2,070	138 lm/W			

Catalog Number	Input Voltage	Wattage	Color Temperature	Lumens	Efficacy	Rated Life	CRI	Power Factor
VTLED-4A-44PS-8CSA	120-277V	44W	3500K	5,764	131 lm/W	50,000 hrs	>80	>0.9
			4000K	5,808	132 lm/W			
			5000K	5,852	133 lm/W			
		28W	3500K	3,892	139 lm/W			
			4000K	3,920	140 lm/W			
			5000K	3,948	141 lm/W			
		18W	3500K	2,556	142 lm/W			
			4000K	2,574	143 lm/W			
			5000K	2,592	144 lm/W			

Catalog Number	Input Voltage	Wattage	Color Temperature	Lumens	Efficacy	Rated Life	CRI	Power Factor
VTLED-4A-75PS-8CSA	120-277V	75W	3500K	9,750	130 lm/W	50,000 hrs	>80	>0.9
			4000K	9,825	131 lm/W			
			5000K	9,900	132 lm/W			
		64W	3500K	8,512	133 lm/W			
			4000K	8,576	134 lm/W			
			5000K	8,640	135 lm/W			
		44W	3500K	6,160	140 lm/W			
			4000K	6,204	141 lm/W			
			5000K	6,248	142 lm/W			

Catalog Number	Input Voltage	Wattage	Color Temperature	Lumens	Efficacy	Rated Life	CRI	Power Factor
VTLED-8A-90PS-8CSA	120-277V	90W	3500K	11,790	131 lm/W	50,000 hrs	>80	>0.9
			4000K	11,880	132 lm/W			
			5000K	11,970	133 lm/W			
		75W	3500K	10,125	135 lm/W			
			4000K	10,200	136 lm/W			
			5000K	10,275	137 lm/W			
		54W	3500K	7,560	140 lm/W			
			4000K	7,614	141 lm/W			
			5000K	7,668	142 lm/W			

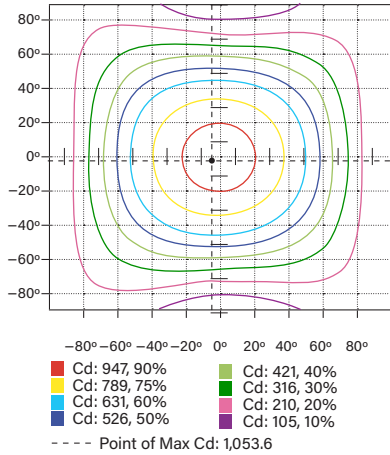
* Preset to highest lumen output (90W / 5000K)

* Color Uniformity: CCT (Correlated Color Temperature) range as per guidelines outlined in ANSI C78.377-2017.

Performance Chart

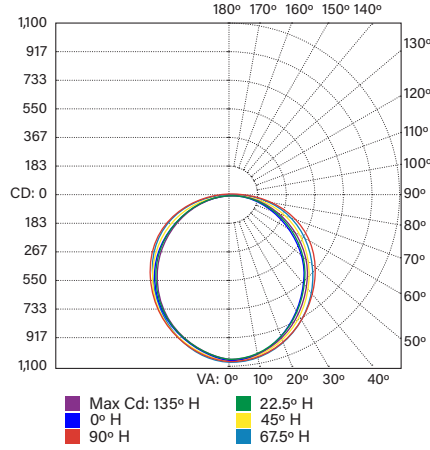
PHOTOMETRIC SPECIFICATIONS

ISOCANDELA PLOT



2' Model (25W)

POLAR CANDELA DISTRIBUTION

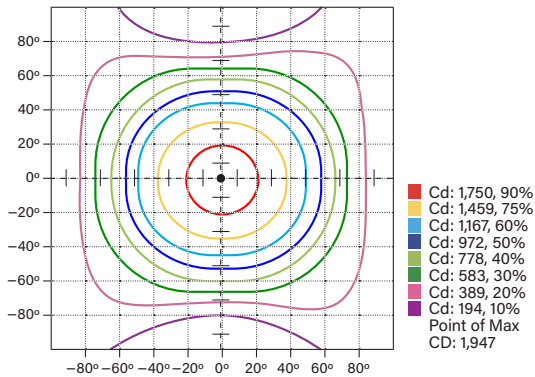


ZONAL LUMEN SUMMARY

Zone	Lumens	% Luminaire
0-60	2,303.8	69.50%
60-90	826.9	25.00%
0-90	3,130.8	94.50%
90-180	182.3	5.50%
0-180	3,313.0	100.0%

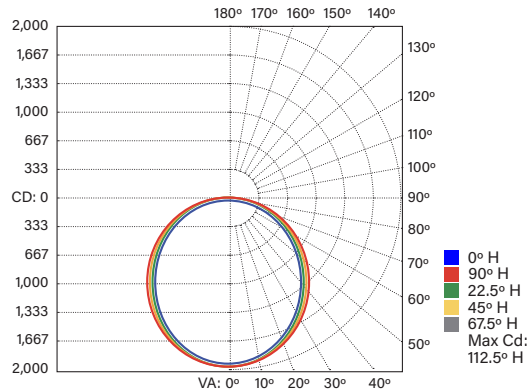
PHOTOMETRIC SPECIFICATIONS

ISOCANDELA PLOT



4' Model (44W)

POLAR CANDELA DISTRIBUTION

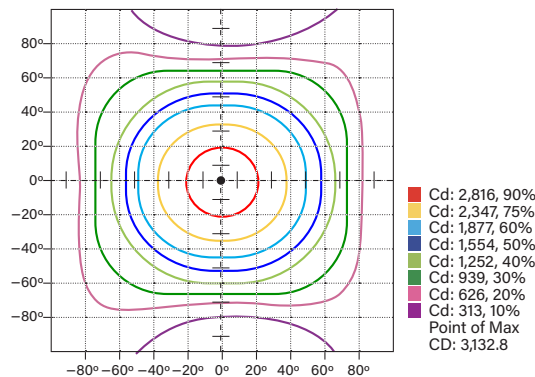


ZONAL LUMEN SUMMARY

Zone	Lumens	% Luminaire
0-30	1,471.7	24.9%
0-40	2,389.2	40.4%
0-60	4,185.5	70.8%
60-90	1,430.6	24.2%
70-100	889.3	15.0%
90-120	258.3	4.4%
0-90	5,616.0	95.0%
90-180	293.3	5.0%
0-180	5,909.3	100%

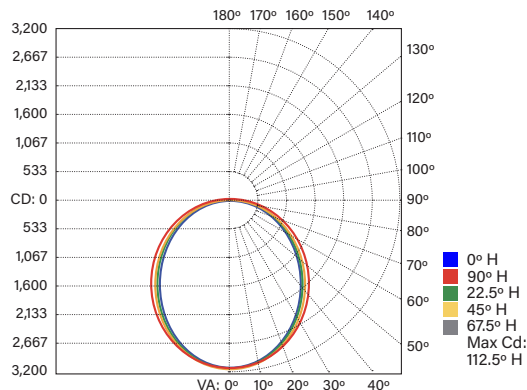
PHOTOMETRIC SPECIFICATIONS

ISOCANDELA PLOT



4' Model (75W)

POLAR CANDELA DISTRIBUTION



ZONAL LUMEN SUMMARY

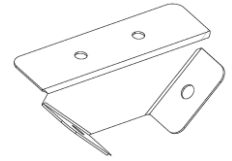
Zone	Lumens	% Luminaire
0-30	2,355.8	24.9%
0-40	3,815.7	40.3%
0-60	6,679.3	70.5%
60-90	2,294.3	24.2%
70-100	1,439.1	15.2%
90-120	439.3	4.6%
0-90	8,973.5	94.7%
90-180	499.7	5.3%
0-180	9,473.3	100%

BEFORE INSTALLATION, PLEASE CONSULT YOUR LOCAL ORDINANCES AND BUILDING CODES FOR COMPLIANCE

Dimensions



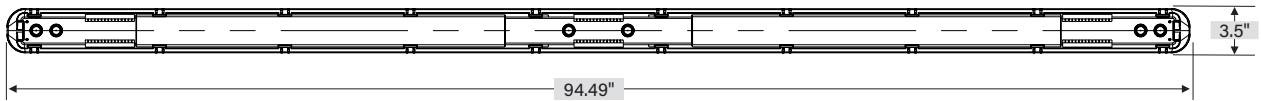
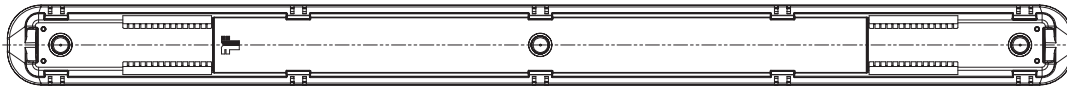
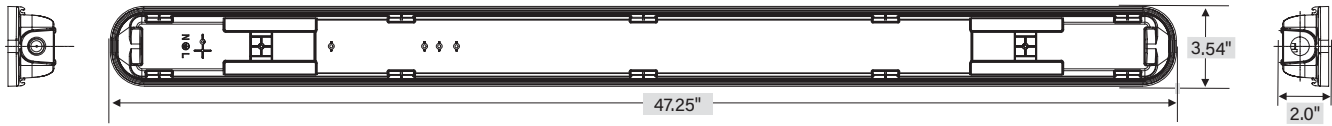
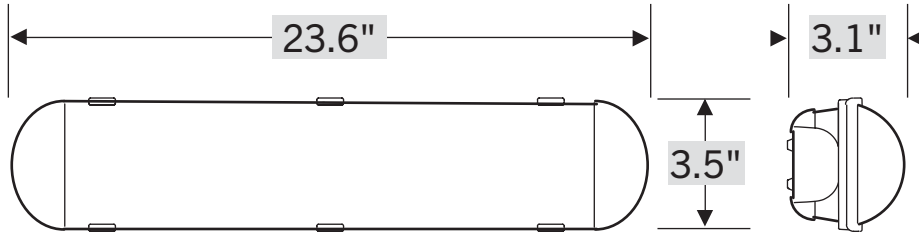
OPTIONAL MICROWAVE SENSOR (EXTERNAL)



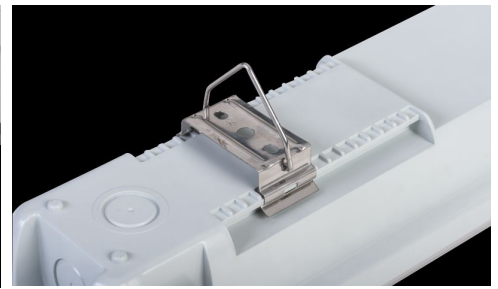
OPTIONAL 45 DEG MOUNTING KIT



OPTIONAL TAMPER-PROOF SCREW KIT



Features



When used in draft prone areas, fixtures with high frequency sensors should be rigidly mounted

LAMAR LED assumes no responsibility for misapplication of fixtures

Due to the rapid advancements in LED technology, please consult our website for the most current technical data.

Specifications subject to change without notice - Rev 0324