



SENTINEL GUARD™

**SECURE BY DESIGN.
SMART BY ENGINEERING.**

Patent-pending security mechanics, uniform luminous surfaces, and high-efficiency performance for correctional spaces where durability, serviceability, and safety all matter.

**SLIDE-AND-SWING SECURITY HINGE | 3D LENS RETENTION
ROOM-SIDE SERVICE | UNIFORM LENS APPEARANCE**



LAMARLED

ENGINEERED BY LAMAR LED.
PROVEN IN AMERICA'S MOST DEMANDING ENVIRONMENTS.

CORRECTIONAL FIXTURES RE-ENGINEERED FROM HINGE TO LENS

SENTINELGUARD™ is built around patent-pending mechanical innovations that improve security, serviceability, and long-term performance in high-abuse environments.



UNIFORM LUMINOUS SURFACE

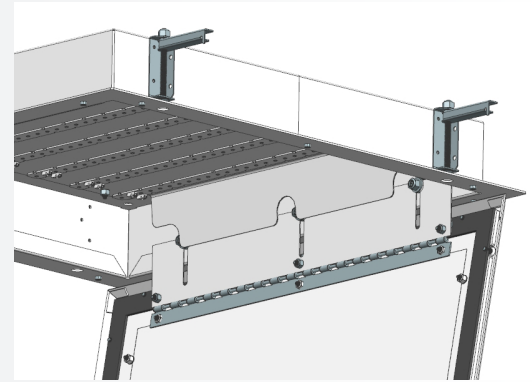
Engineered optics create a clean, even lens appearance with no visible light bars or hotspots, improving visual comfort and supporting clearer camera visibility in cells, corridors, and dayrooms.

LOWER WATTS AT EQUIVALENT DELIVERED LIGHT

SENTINELGUARD™ delivers comparable or superior lumen output in correctional-grade applications at lower input wattage, reducing energy costs without compromising security-rated construction.

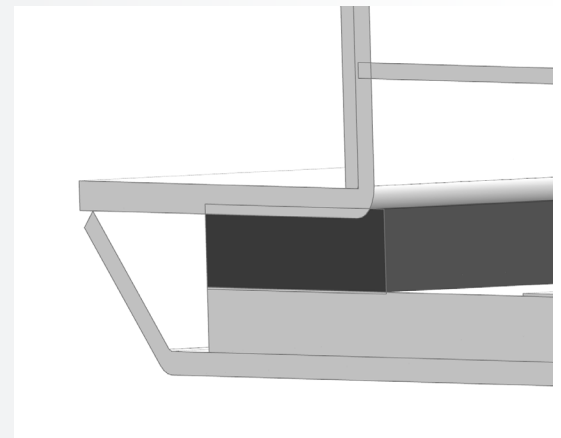
	LUMENS	WATTAGE	EFFICACY
SentinelGuard™	8,000	68W	118 lm/W
Competitor Fixture	8,000	89W	90 lm/W

Delivered lumens and wattage based on 0.125" frosted acrylic inner lens with 0.187" clear polycarbonate outer lens @ 80CRI / 4000K. Actual fixture wattage may deviate based on lens combination, CRI, and color temperature. See spec sheet for more information.



PATENT-PENDING SLIDE-AND-SWING SECURITY HINGE

A patent-pending access system that clears the seal before pivoting open, reducing gasket wear and preserving wet-location integrity through repeated service cycles.



PATENT-PENDING 3D LENS RETENTION SYSTEM

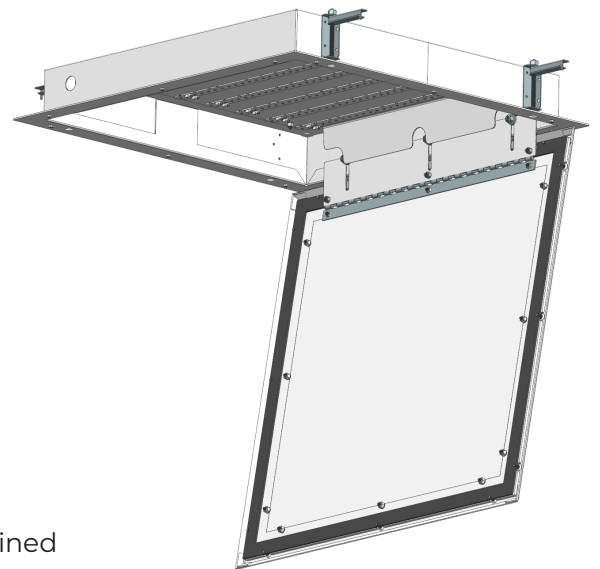
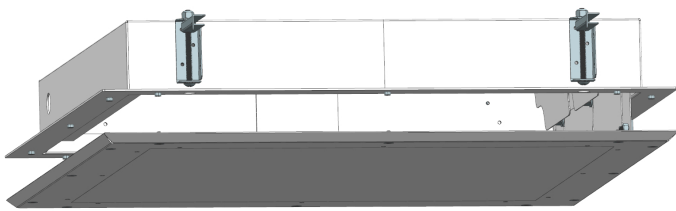
A patent-pending multi-axis retention design that distributes force around the lens perimeter for tighter anti-pry performance, reduced stress concentration, and a more stable assembly under abuse.

HIGH SECURITY, HIGH EFFICIENCY

Engineering That Redefines the Category

PATENT-PENDING

SLIDE-AND-SWING SECURITY HINGE



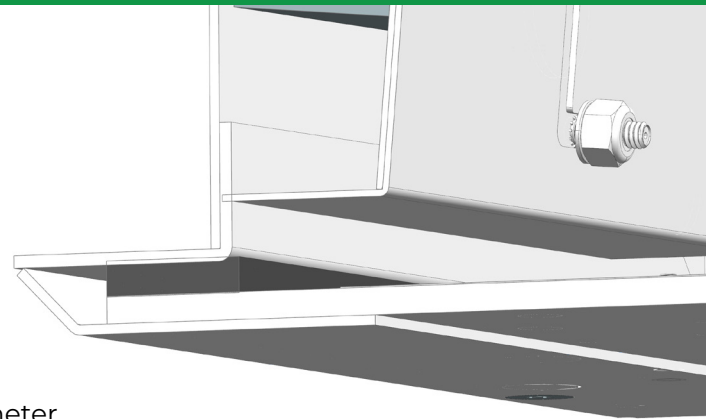
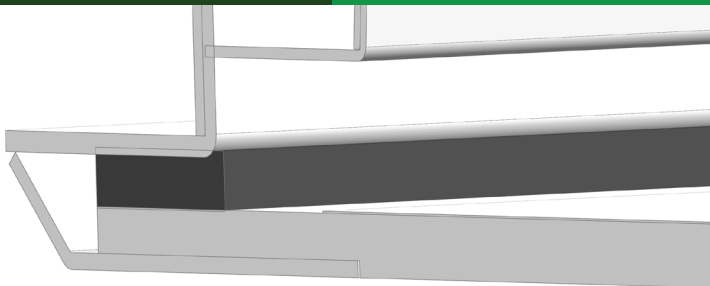
HOW IT WORKS

The door first clears the gasket seal, then pivots on a concealed hinge — reducing gasket shear and protecting wet-location integrity over repeated service cycles.

- ◆ Room-side service access
- ◆ Concealed hinge mechanism
- ◆ Gasket-preserving motion
- ◆ Wet-location integrity maintained

PATENT-PENDING

3D LENS RETENTION SYSTEM



HOW IT WORKS

Multi-axis retention distributes force around the full lens perimeter instead of relying on point-loaded clips or doorframe edges.

- ◆ Full-perimeter force distribution
- ◆ Enhanced anti-pry resistance
- ◆ Reduced stress concentration
- ◆ Tighter, quieter assembly

UNIFORM LUMINOUS SURFACE



HOW IT WORKS

Engineered optics eliminate visible light bars and hotspots. The result: a clean, even, luminous surface that improves visual comfort, reduces glare, and supports clearer CCTV camera visibility.

- ◆ No visible light bars
- ◆ Improved camera visibility
- ◆ No hotspots
- ◆ Reduced glare

PERFORMANCE

Lower watts at equivalent delivered light in correctional-grade applications



EFFICIENCY



LED LIFETIME
L70 @ 40°C



IMPACT
RESISTANCE



WET LOCATION
RATED



SALT SPRAY
TESTED

SENTINELGUARD™ FAMILY

MODEL	SIZE	LUMEN RANGE	APPLICATION
SG-11	12" x 12" x 3.5"	3,500–9,000 lm	Corridor & Cellblock
SG-12	12" x 24" x 3.5"	3,500–9,000 lm	Corridor & Cellblock
SG-22	24" x 24" x 3.5"	4,000–9,000 lm	Dayrooms & Small Spaces
SG-14	12" x 48" x 3.5"	4,000–9,000 lm	Corridor & Cellblock
SG-24	24" x 48" x 3.5"	4,000–12,000 lm	Common Areas & Larger Dayrooms
SG-WM	36" x 5" x 4"	1,500–3,500 lm	Wall Mount
SG-TL	11.75" x 4.75"	1,400–1,800 lm	Cellblock, Dayrooms, Holding Areas, & Secure Interview Rooms

SUFFIX KEY

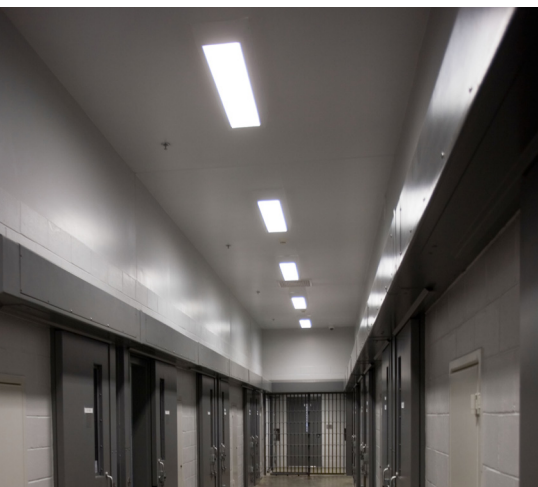
R = Recessed mount
S = Surface mount
WM = Wall mount
TL = Task Light Recessed wall mount

APPLICATION MATRIX

Corridors & Cellblocks SG-11R, SG-12R/S, SG-14R/S, SG-WM
Dayrooms & Small Spaces SG-22R, SG-22S
Common Areas & Larger Dayrooms SG-24R, SG-24S
Cellblock, Dayrooms, Holding Areas, & Secure Interview Rooms SG-TL

Examples:

SG-22R = 2x2 Recessed | SG-24S = 2x4 Surface



CORRIDORS & CELLBLOCKS



COMMON AREAS



DAYROOMS & SMALL SPACES

BUILT TO PERFORM UNDER ABUSE

CONSTRUCTION

- ◆ **Housing:** Die-formed prime grade material, TIG and spot-welded construction
- ◆ **Lens:** Maximum thickness 0.625" — prismatic inner + clear outer recommended
- ◆ **Fasteners:** Recessed tamper-resistant Torx with center pin reject
- ◆ **Finish:** Durable powder coat, salt spray tested >1,000 hours

OPTICAL & ELECTRICAL

- ◆ **Light Engine:** High-efficiency LED module
- ◆ **CCT:** 3000K–5000K, optional tunable white (2700K–6500K)
- ◆ **CRI:** 80/90
- ◆ **Lifetime:** >100,000 hours L70 @ 40°C
- ◆ **Voltage:** 120–277V
- ◆ **Dimming:** 0–10V, DALI (consult factory)

WARRANTY

- ◆ **5 Year Limited Warranty** — parts replacement
- ◆ **Optional 10 Year Limited Warranty** — parts replacement
 - See our terms & conditions page at lamarled.com for details

CERTIFICATIONS

- ◆ Patent Pending
 - Slide-and-Swing Hinge
 - 3D Lens Retention System
- ◆ UL 1598, Wet Location
- ◆ IP65, IK10+
- ◆ ASTM tamper resistance standards
- ◆ BAA/BABA compliant, Union Made

ORDERING OPTIONS

- ◆ **Mounting:** Surface / Recessed / Wall
- ◆ **Housing Gauge:** 12/14/16/18-GA CRS
- ◆ Lens thickness
- ◆ Lumen package (by size)
- ◆ CRI and CCT
- ◆ Finish color
- ◆ Voltage and control option
- ◆ Wet-location certifications



SPECIALTY PRODUCTS

SENTINELGUARD™ TASK LIGHT

PRECISION ILLUMINATION WHERE IT MATTERS MOST

- ◆ **Applications:** Correctional cells, dayrooms, holding areas, secure interview rooms
- ◆ 16W LED, 1,400–1,800 lm, 2700K–5000K
- ◆ **Faceplate:** 11.75" × 4.75"
- ◆ **Aperture:** 5.7" × 1.1"
- ◆ **Projection:** ~1" from wall surface
- ◆ **Construction:** Cast aluminum faceplate, radiused edges for ligature resistance
- ◆ Patent Pending
- ◆ UL 1598 (optional), Wet Location (optional), IP65, IK10+
- ◆ ASTM tamper resistance standards
- ◆ BAA/BABA compliant
- ◆ 5 Year Limited Warranty — parts replacement



SENTINELGUARD™ EXIT SIGN

CLEAR DIRECTION UNDER ANY CIRCUMSTANCE

- ◆ **Construction:** Welded one-piece die-formed CRS, 14–18 gauge
- ◆ **Size:** 17.25" × ≤13.877"
- ◆ **LED Color:** Red or Green
 - New York City-approved 8" letters
- ◆ Optional 90-min NiCad battery backup
- ◆ Cold battery option down to -50°F
- ◆ UL listed, Wet Location (optional), IP65 (optional), IK10+
- ◆ ASTM tamper resistance standards
- ◆ Union-made, BAA/BABA compliant
- ◆ 5 Year Limited Warranty — parts replacement
- ◆ UL 924, NFPA 101





SENTINEL GUARD™

by Lamar LED

SALES@LAMARLED.COM

888.66.LAMAR (52627)

631.777.7700



READY TO MOVE FORWARD?

Request spec sheets, schedule a demo, or talk to an engineer.